



# ALLIANCE

## KNIT COMPOSITE LTD.

### COMPANY PROFILE

VERSION: V 1.5    PUBLISHED: 18 March 2025

MEDIA AND PUBLICATIONS: INFORMATION MANAGEMENT AND TECHNOLOGY DEPT.

© ALLIANCE KNIT COMPOSITE LIMITED

[www.akclbd.com](http://www.akclbd.com)





**ALLIANCE**  
KNIT COMPOSITE LTD.



## Tag Line

**2007**

**FOUNDED**

**4,80,813  
SFT.**

**WORKING AREA**

**3000**

**WORKING STUFF**

[www.akclbd.com](http://www.akclbd.com)



**ALLIANCE**  
KNIT COMPOSITE LTD.



## About Alliance

Alliance is one of the leading textile companies with a considerable reputation in dyeing, printing, finishing fabrics and manufacturing readymade garments in Bangladesh. AKCL was established in June 2007. It is located at Saver, Ashulia industrial area in Dhaka district which is 10 Km away from Hazrat Shahajalal International airport.

AKCL's working area covers 4,80,813 sft. and has more than 3000 skilled and experienced workforces. AKCL earns expertise in producing various kinds of garment products such as all types of knit-with-undergarments for men women& kids



[www.akclbd.com](http://www.akclbd.com)



**ALLIANCE**  
KNIT COMPOSITE LTD.



## Mission - Vision - Motto

### Mission

To establish AKCL as a one-stop source for the Global Knit Apparel market.

### Vision

To satisfy and meet customers' expectations by developing and providing products and services on time, which offer value in terms of Quality, Price & Safety.

To provide the employees internationally acceptable working condition /standards.

To attain highest level of competence through continuous development of the professional management system and to ensure complete transparency in all aspects of business.

### Motto

Human Spirit | Ethical Business  
Practice | Protecting Environment





**ALLIANCE**  
KNIT COMPOSITE LTD.



## Principles & Philosophy

### Philosophy

Alliance is known as an entity whose main driving force is its Human Spirit.

### Principles

We distinguish ourselves by adhering to clear values that have shaped our actions, products, and strategies. These principles define the way we operate and produce, guiding all those working under the name "Alliance". We hold our leaders accountable for making our values concrete and promoting our ethics through passion and perseverance. We ensure consistency by measuring and monitoring every aspect of the business to define a pathway for ethical and product excellence.



# Textile R&D

Textile R&D is standing at the center of generating business with plenty of opportunity to create thousands of innovative products to the fashion line.

It works with the latest textile technology to generate business concepts, then transforming the concepts into commercial products.







**ALLIANCE**  
KNIT COMPOSITE LTD.



# Core Fabrics



Single Jersey



Double Lacoste

●	Single Jersey
●	Elastane Single Jersey
●	Single Lacoste
●	Double Lacoste
●	Pique
●	Double Pique
●	1x1 RIB
●	2x1 RIB
●	Elastane Rib
●	Waffles
●	Terry
●	Fleece
●	Feeder Stripe
●	Collar/Cuff
●	Heavy-S/J
●	Pointal Rib
●	Terry
●	Pique
●	Draw String
●	Inkjet S/J
●	Interlock
●	Viscose S/J
●	Thermal



2/2 RIB



Feeder Stripe



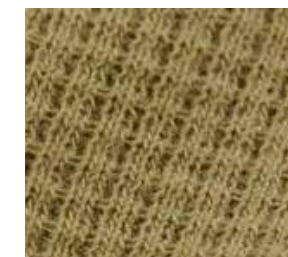
Fleece



Terry



Waffles



Thermal

[www.akclbd.com](http://www.akclbd.com)



**ALLIANCE**  
**KNIT COMPOSITE LTD.**



# Design Studio



## MARKET ANALYSIS

Europe based Design Expert providing constant market shop visits updates and analyses with regular competitive product shopping.



## DESIGN COLLECTIONS - PROACTIVE

Proactive Men's, Women's and Kids' Design Collections for Casual and activewear based on Seasonal trends.



## DESIGN COLLECTIONS - REACTIVE

Reactive Men's, Women's and Kids' Design Collections for Casual and Active-wear based on directions received from Customers.



## PRODUCT DEVELOPMENT

Product Development Capability on the concepts shared by customers.



## IN-HOUSE SAMPLE-ROOM

Dedicated Sample-Room facility to create prototypes based on own concepts as well as customer tech-packs

[www.akclbd.com](http://www.akclbd.com)





**ALLIANCE**  
KNIT COMPOSITE LTD.



# Print Capability

**Puff Print**

**Fluorescent Print**

**Silicon Gel Print**

**Glow In The Dark Print**

**Rubber Gel Print**

**Pigment Print**

**HD Metallic Print**

**Mat Silicone Print**

**Reactive Print**

**Glossy HD Print**

**Reverse Print**

**Pearlescent Print**

**Silicone Print**

**Foil Print**

**Raise Rubber Print**

**Flock Print**

**Discharge Print**

**Plastisol Print**

**Metalic Print**

[www.akclbd.com](http://www.akclbd.com)





**QUALITY  
OUTFITS**

## **KNITWEAR READY MADE GARMENTS**



T-Shirt
Polo Shirt
Tank Top
Top/Bottom
Night Wear
Sleep Wear
Hoody
ZipHoody
Joggar
Sweat Shorts
Jacket Sweat Shirt





ALLIANCE  
KNIT COMPOSITE LTD.



next

GLOBAL PARTNER

NewWave  
GROUP

JEANS  
fritz

MATALAN



NKD



U.S. POLO ASSN.  
SINCE 1890

NORMA



LOUIS PHILIPPE

MANGO



KENNETH COLE

DKNY ROSSMANN

Just Like  
HERO



LPP

WEATHERPROOF

www.akclbd.com



BayCity

peacock



# Production Capacity

## Knitting

**450 Ton /Mo**

## Dyeing

**2200 Ton /Mo**

### READYMADE GARMENTS

#### CUTTING

Present Capacity 20,80,000 pcs/Mo  
Projected Capacity 39,00,000 pcs/Mo

#### SAMPLING

Present Capacity 400 pcs/Mo  
Projected Capacity 500 pcs/Mo

#### SEWING

SEWING Machine : 1200 Nos  
Running: 50 Lines  
From Sept'25: 70 Lines

#### PRINTING

Present Capacity 10,00,000 pcs/Mo  
Projected Capacity 13,00,000 pcs/Mo

Under Construction: 100 New Lines  
Production Starts on March 2025  
Present Capacity 2.20 Million/Mo  
Projected Capacity 5.72 Million/Mo

#### FINISHING

Present Capacity 23,00,000 pcs/Mo  
Projected Capacity 60,00,000 pcs/Mo

A Composite  
Manufacturing  
Industry

50  
Sewing  
Lines  
in  
RMG







## COLOR LAB SECTION



## List of Machineries

Sl.	Machine Name	Brand Name	Model NO	Origin	Q.T.Y
1	Spectrophotometer	X-rite	CIA-26	USA	01 Pcs
2	Auto Dispenser	Odesi	Auto Lab	Turkey	01 Pcs
3	Digital Balance		Lab	China	01 Pcs
4	Lab Dyeing M/C-01	Xiamen Rapid Co.Ltd	Eco-24	China	06 Pcs
5	Lab Dyeing M/C-08	Mathis	SLD-24P	Taiwan	01 Pcs
6	Lab Dyeing M/C-09	Datacolor	Ahiba IR	UK	01 Pcs
7	Light Box	Verivied	CAC-120	China	02 Pcs
8	Dryer	Xiamen Rapid Co.Lt	R1	China	02 Pcs
9	Padding Mangle	Xiamen Rapid Co.Ltd	P/A1		01 Pcs





**ALLIANCE**  
KNIT COMPOSITE LTD.



# TESTING LAB SECTION

## List of Machineries



SL	Machine Name	Brand Name	Model No	Origin	Qty.
1	Electrolux Dryer Electrolux	SDL Atlas	N1130E17	Thailand	02Pcs
2	Washing	SDL Atlas	W555H	Thailand	01Pcs
3	Washcator Washing	SDL Atlas	FOM71CLS	Sweden	02Pcs
4	Rota Wash	SDL Atlas	M228	UK	02Pcs
5	Crock Meter	SDL Atlas	M238BB	UK	01Pcs
6	Incubator	SDL Atlas	G209A	UK	02Pcs
7	ICI Pilling	SDL Atlas	M227	UK	01Pcs
8	Busting Strength Tester	James Heal	1440	UK	01Pcs
9	Martindale Pilling	SDL Atlas	N/P	UK	01Pcs
10	Pilling Viewer	Verivied		UK	01Pcs
11	Strech & Recovery	UTESTER		China	01Pcs
12	Light Box	Verivied	CAC-120	UK	01Pcs
13	PH Meter	Hanna	HI2211	Italy	01Pcs
14	PH Shaker	YIH DER	TS-520D	Taiwan	01Pcs
15	Digital Balance		Lab Lab		01Pcs
16	GSM Cutter		M852-13H		02Pcs
17	Sewing Machine	Pegasus			01 Pcs







**ALLIANCE**  
KNIT COMPOSITE LTD.



## DYEING SAMPLE

### List of Machineries



SL	M/C TYPE	M/C No.	BRAND	ORIGIN	CAPACITY(KG)	REMARKS
1	SAMPLE	S-8	FONGS	CHINA	10	HTHP
2	SAMPLE	S-3	FONGS	CHINA	10	HTHP
3	SAMPLE	S-4	FONGS	CHINA	10	HTHP
4	SAMPLE	S-1	THIES	GERMANY	20	HTHP
5	SAMPLE	S-2	THIES	GERMANY	20	HTHP
6	SAMPLE	S-11	THIES	GERMANY	20	HTHP
7	SAMPLE	S-13	FONGS	CHINA	30	HTHP
8	SAMPLE	S-14	FONGS	CHINA	30	HTHP
9	SAMPLE	S-15	FONGS	CHINA	30	HTHP
10	SAMPLE	S-16	FONGS	CHINA	30	HTHP
11	SAMPLE	S-12	FONGS	CHINA	30	HTHP
12	SAMPLE	S-9	FONGS	CHINA	30	HTHP
13	SAMPLE	S-10	FONGS	CHINA	30	HTHP
14	SAMPLE	S-5	THIES	GERMANY	40	HTHP
15	SAMPLE	S-6	FONGS	CHINA	40	HTHP
16	SAMPLE	S-7	FONGS	CHINA	60	HTHP





# DYEING UNIT-1

## List of Machinery



SL.	M/C TYPE	M/C NO	BRAND	ORIGIN	CAPACITY(KG)	REMARKS
1	BULK	8	FONGS	CHINA	200	ATMOSPHERIC
2	BULK	9	BRAZZOLI	ITALY	400	HTHP
3	BULK	20	BRAZZOLI	ITALY	400	HTHP
4	BULK	10	FONGS	CHINA	500	HTHP
5	BULK	15	SCLAVOS	GREECE	600	HTHP
6	BULK	11	FONGS	CHINA	600	ATMOSPHERIC
7	BULK	14	SCLAVOS	GREECE	750	HTHP
8	BULK	16	FONGS	CHINA	800	ATMOSPHERIC
9	BULK	13	SCLAVOS	GREECE	1000	HTHP
10	BULK	17	SCLAVOS	GREECE	1000	HTHP
11	BULK	18	MCS	ITALY	1000	HTHP
12	BULK	12	FONGS	CHINA	1200	ATMOSPHERIC
13	BULK	19	MCS	ITALY	1500	HTHP





# **DYEING UNIT-2**

## **List of Machinery**



SL.	M/C TYPE	M/C NO	BRAND	ORIGIN	CAPACITY(KG)	REMARKS
1	BULK	1A	FONGS	CHINA	120	HTHP
2	BULK	1B	FONGS	CHINA	120	HTHP
3	BULK	2B	Thies	Germany	180	HTHP
4	BULK	3B	Thies	Germany	360	HTHP
5	BULK	2A	Thies	Germany	360	HTHP
6	BULK	3A	FONGS	CHINA	400	HTHP
7	BULK	4A	Thies	Germany	540	HTHP
8	BULK	4B	Thies	Germany	540	ATMOSPHERIC
9	BULK	5B	DANITECH	ITALY	1800	HTHP
10	BULK	5A	DANITECH	ITALY	1800	HTHP
11	BULK	6A	MCS	ITALY	750	HTHP
12	BULK	7B	MCS	ITALY	750	HTHP
13	BULK	9B	BRAZOLLI	ITALY	1000	HTHP
14	BULK	10B	BRAZOLLI	ITALY	1000	HTHP
15	BULK	8B	MCS	ITALY	1000	HTHP
16	BULK	7A	FONGS	CHINA	1000	HTHP
17	BULK	8A	FONGS	CHINA	1000	HTHP
18	BULK	10A	BRAZOLLI	ITALY	1500	HTHP
19	BULK	11B	BRAZOLLI	ITALY	1500	HTHP
20	BULK	9A	FONGS	CHINA	1500	HTHP





# DYEING UNIT-3

## List of Machinery



SL.	M/C TYPE	M/C NO	BRAND	ORIGIN	CAPACITY(KG)	REMARKS
1	BULK	1	THIES	GERMANY	120	HTHP
2	BULK	2	THIES	GERMANY	120	HTHP
3	BULK	3	THIES	GERMANY	180	HTHP
4	BULK	4	TECHNINOX	PORTUGAL	300	HTHP
5	BULK	5	BRAZOLLI	ITALY	500	HTHP
6	BULK	6	BRAZOLLI	ITALY	500	HTHP
7	BULK	7	BRAZOLLI	ITALY	1500	HTHP
8	BULK	8	TECHNINOX	PORTUGAL	300	HTHP
9	BULK	9	FONGS	CHINA	600	HTHP
10	BULK	10	FONGS	CHINA	800	HTHP
11	BULK	11	AK	TAIWAN	500	HTHP
12	BULK	12	AK	TAIWAN	250	HTHP
13	BULK	13	BRAZOLLI	ITALY	500	HTHP
14	BULK	14	FONGS	CHINA	500	HTHP
15	BULK	15	DANITECH	ITALY	1200	HTHP





# DYEING Finishing

## List of Machinery

SL	M/C NAME	M/C NAME	BRAND	ORIGIN	CAPACITY(KG)
1	OPEN WIDTH FABRICS FINISHING MACHINE	Slitting-01	EL	Italy	14000
2		Slitting-02	SUN	China	14000
3		Slitting-03	BIANCO	Italy	14000
4		Slitting-04	BIANCO	Italy	14000
5		Slitting-05	LINK	China	14000
6		Bag Sewing Machine	PENGLONG	China	10000
7		Bag Sewing Machine	PENGLONG	China	10000
8		Stenter-01	EHWHA GLOTECH	South Korea	15000
9		Stenter-02	EHWHA GLOTECH	South Korea	15000
10		Stenter-03	EHWHA GLOTECH	South Korea	15000
11		Stenter-04	MEGATEX	South Korea	15000
12		Stenter-05	MEGATEX	South Korea	15000
13		Stenter-06	BRUCKNER	Germany	15000
14		Stenter-07	BRUCKNER	Germany	15000
15		Chain Dryer	SANTEX	Switzerland	15000
16		Chain Dryer	MONFONGS	China	14000
17		Open compactor	Lafer	Italy	12000
18		Open compactor	Lafer	Italy	12000
19		Open compactor	Lafer	Italy	12000
20		Open compactor	Lafer	Italy	12000
21		Open compactor	Ferraro	Italy	12000
22	TUBULAR FABRICS FINISHING MACHINE	Tumble Dryer-01	TONGXIN	China	1000
23		Tumble Dryer-02	TONGXIN	China	1000
24		Tumble Dryer-03	TONGXIN	China	1000
25		Squeezer Machine	BIANCO	Italy	10000
26		Squeezer Machine	MARSEN	TURKEY	8000
27		Dryer	Tung Yang	TAIWAN	5000
28		Air Turning Machine	HONSUN(FG-1L)	China	8000
29		Air Turning Machine	HONSUN(FG-1L)	China	8000
30		Air Turning Machine	HONSUN(FG-1L)	China	8000
31		Tube Compactor	FAB-CON	USA	6000
32		Tube Compactor	TUBE TEX	USA	10000
33		Tube Compactor	TUBE TEX	USA	10000
34	Singeing	Singeing	KELUN	China	10000





**ALLIANCE**  
KNIT COMPOSITE LTD.



# UTILITY SECTION

## List of Machineries



SL	M/C NAME	BRAND	ORIGIN	CAPACITY(KG)
1	Air Compressor-01	Boge Screw Compressor SF 60-3	Germany	45 KW
2	Air Compressor-02	Boge Screw Compressor SF 60-3	Germany	45 KW
3	Air Compressor-02	Boge Screw Compressor SF 60-3	Germany	45 KW
4	Air Compressor-02	Boge Screw Compressor SF 60-3	Germany	45 KW
5	Air Compressor-03	Gardener denver	Germany	45 KW
6	Air Compressor-04	ATLAS COPCO	BELGIAM	45 KW
7	Air Dryer (Refrigenaration Dryer)	BOGE	Germany	45 KW
8	Air Dryer (Refrigenaration Dryer)	BOGE	Germany	45 KW
9	Air Dryer (Refrigenaration Dryer)	BOGE	Germany	45 KW
10	Air Dryer (Refrigenaration Dryer)	BOGE	Germany	45 KW
11	Air Dryer (Refrigenaration Dryer)	ATLAS COPCO	BELGIAM	45 KW
12	Air Dryer (Refrigenaration Dryer)	ATLAS COPCO	BELGIAM	45 KW
13	Air Dryer (Refrigenaration Dryer)	Gardener denver	Germany	45 KW
14	Pressure pump set (8 set)	KSB	India	100 m3 X8
15	Submersible pump-01	KSB	India	22 KW
16	Submersible pump-02	KSB	India	45 KW
17	Submersible pump-03	KSB	India	45 KW
18	Submersible pump-04	KSB	India	45 KW
19	Submersible pump-05	GENERAL	Germany	55KW
20	ETP-80m3	India	India	80 m3
21	Cooling tower motor	Chung Ha	China	100RT
22	Cooling tower motor	Chung Ha	China	100RT
23	Cooling tower motor	Chung Ha	China	100RT
24	Cooling tower pump motor	Siemens	India	100 m3
25	Cooling tower pump motor	Siemens	India	100 m3
26	Cooling tower pump motor	Siemens	India	100 m3
27	Cooling tower pump motor	Siemens	India	100 m3
28	Cooling tower pump motor	Siemens	India	100 m3
29	Cooling tower pump motor	Siemens	India	100 m3
30	Hydrant Pump	ARMSTRONG	Canada	1250 GPM
31	Steam Boiler-01	Daelim Royal	South Korea	10 Ton
32	Steam Boiler-02	Daelim Royal	South Korea	12 Ton
33	Steam Boiler-03	Daelim Royal	South Korea	10 Ton
34	EGB BOILER	Daelim Royal	South Korea	0.75 Ton
35	EGB BOILER	Daelim Royal	South Korea	2.10 Ton
36	Thermo oil heater-01	Daelim Royal	South Korea	30 Lac Kcal
37	Thermo oil heater-02	Daelim Royal	South Korea	20 Lac Kcal
38	Thermo oil heater-03	Daelim Royal	South Korea	30 Lac Kcal
39	Gas Generator-01	Jenbacher	Austria	1064 KW
40	Gas Generator-02	Jenbacher	Austria	1501 KW
41	Gas Generator-03	Jenbacher	Austria	1501 KW





## Enterprise Resource Planning (ERP)

We have high availability & structured Data management system with the facility of Plan monitorization, Capacity analysis & line loading, Real data tracking system, Bio matric attendance & payroll, Warehouse, inventory & Finance.

## LAB Facility

ts laboratory facilities. The lab is now equipped with update art apparatus. Thus allowing to obtain precision results along with quick turn-around time for any physical test needs.

## Type of test

Color Fastness to Wash, Perspiration, Phenol Yellowing, Rubbing, Saliva, Water, Twisting (Spiraled), Household laundering, PH , Nickel, Pilling Resistance.

## Sample & Development

We have a well-facilitated apparel sample making & development team with a structure that the ability to quickly deliver sampling & development for the customer.

## Health & Safety

First AID in work

The health and safety at work Act, criminal and civil l

## Law

Health and safety policy.

Information & training.

Display the law poster.

Risk assessment.

Right workplace facilities.

## Security & Surveillances

Our premises have been covered under standard security policy & a team of own security department.

Also deployed real time surveillance monitoring and notification system with support of intelligent cameras

from different points of view.

## ETP

Capable of cleansing hazardous substances from dye chemicals which exceeds factory required capacity and also fully compliant with national as well as international standard.

## Electricity Supply

Electric Substation :5MV 33/11KV

Gas generator :1501KW X 2 nos

Boiler :Capacity : 8 Kg / SCM

## Sustainability

We tried to clothing production that the clothes are produced in a way that affects the environment as little as possible. For sustainable fashion production, organic and natural materials are used, working conditions at the factories are fair and the pollution emission is kept as low as possible in practice.





**ALLIANCE**  
KNIT COMPOSITE LTD.



## Recognitions







**ALLIANCE**  
**KNIT COMPOSITE LTD.**



**Chairman & Managing Director**

Zaeem Ahamed

Email: [chairman@akclbd.com](mailto:chairman@akclbd.com)

**OPERATION & ADMINISTRATION**

Md. Shafi Uddin

Chief Operating officer

Email: [shafi.uddin@akclbd.com](mailto:shafi.uddin@akclbd.com)

**Planning & Development**

Md. Nurul Islam

Sr. General Manager

Planning & Development

Email: [nurul.islam@akclbd.com](mailto:nurul.islam@akclbd.com)

**Textile**

Mithun Biswas

General Manager

Cell: 01729 062 093

Email: [mithun.bishaws@akclbd.com](mailto:mithun.bishaws@akclbd.com)

**Marketing & Merchandising (BU-1)**

Uttam Kumar Shil

General Manager

Cell: 01729 062 183

Email: [uttam@akclbd.com](mailto:uttam@akclbd.com)

**Marketing & Merchandising (BU-2)**

Md. Saiful Islam Shohag

General Manager

Cell: 01329 736 757

Email: [shohag@akclbd.com](mailto:shohag@akclbd.com)

**Marketing & Merchandising (BU-3)**

Md. Mesbah Uddin Khan

General Manager

Cell: 01729 062 245

Email: [mesbah@akclbd.com](mailto:mesbah@akclbd.com)

**Marketing & Merchandising (BU-4)**

Md. Alamgir Hossain

General Manager

Cell: 01729 062 266

Email: [alamgir@akclbd.com](mailto:alamgir@akclbd.com)

**Compliance**

Md. Johurul Islam

Sr. Manager

Cell: 01729 062 143

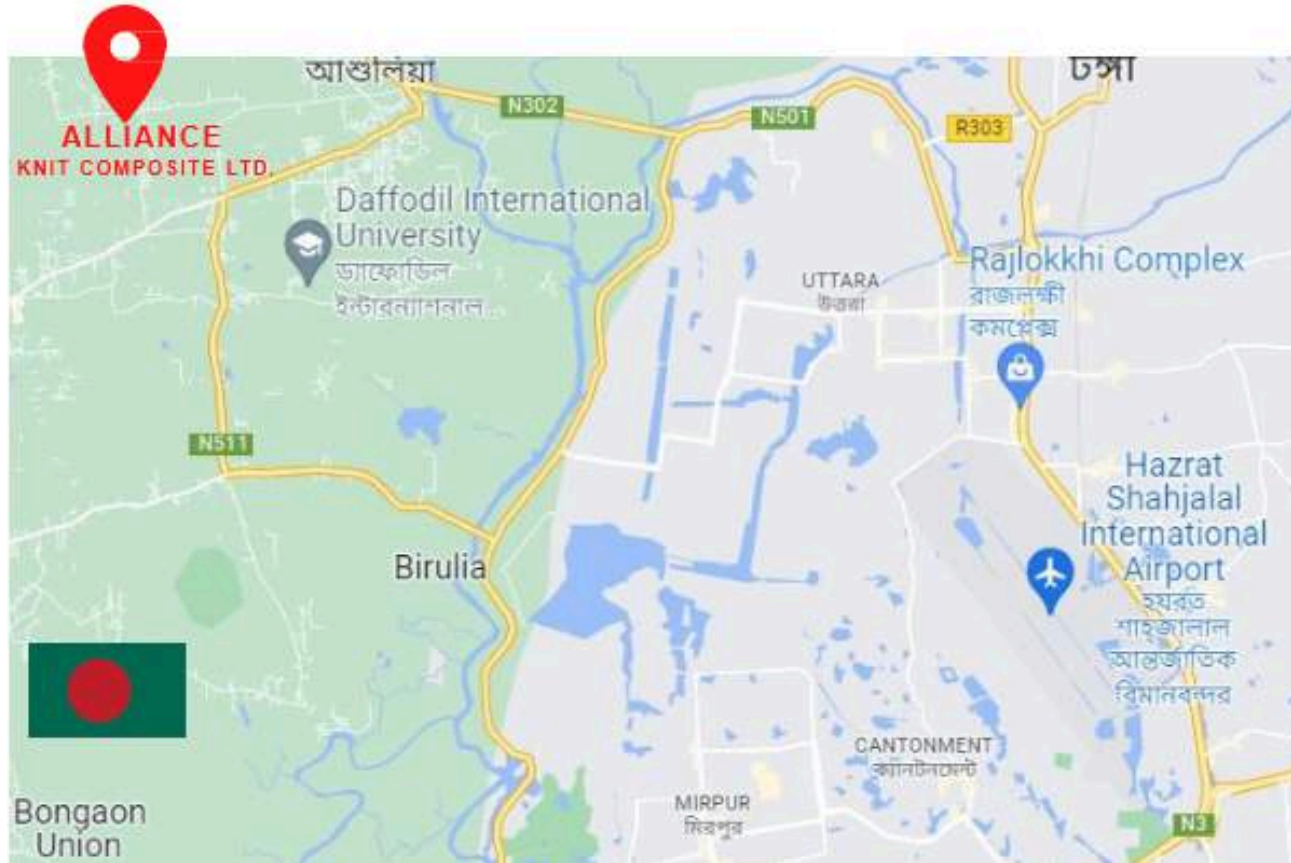
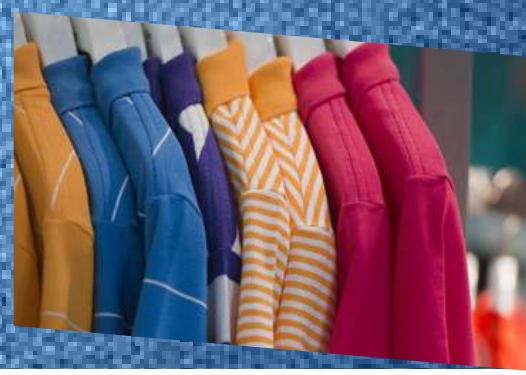
Email: [johurul@akclbd.com](mailto:johurul@akclbd.com)

**[www.akclbd.com](http://www.akclbd.com)**





**ALLIANCE**  
**KNIT COMPOSITE LTD.**



**AKCL Office & Factory: Holdings # 08/118, Pukur Par, Zirabo, Ashulia, Saver, Dhaka-1341, Bangladesh.**

**Email: [info@akclbd.com](mailto:info@akclbd.com)**

**Tel: +8809602222233, 01729062244, 01729062128**

**[www.akclbd.com](http://www.akclbd.com)**





KNIT COMPOSITE LTD.



# GOOD MANUFACTURING PRACTICE

## END COMPANY PROFILE

VISIT : [www.akclbd.com](http://www.akclbd.com)

VERSION : v1.5

PUBLISHED : 18 March 2025

©ALLIANCE KNIT COMPOSITE LTD.

**MEDIA & PUBLICATION: INFORMATION TECHNOLOGY DEPARTMENT**

[www.akclbd.com](http://www.akclbd.com)